



Friday, June 5, 2020

A Message from Farmworker Health Network (FHN)

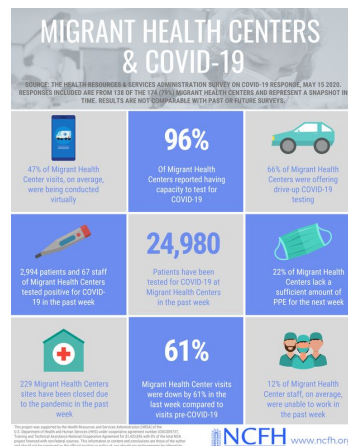
The **Farmworker Health Network (FHN)** is comprised of six National Cooperative Agreements in agricultural worker health funded through the U.S. Department of Health and Human Services' Health Resources and Services Administration (HRSA) to provide training and technical assistance to current and potential Health Centers. The FHN includes: the *National Association of Community Health Centers (NACHC)*, *Health Outreach Partners (HOP)*, *Farmworker Justice (FJ)*, *MHP Salud*, *Migrant Clinician's Network (MCN)*, and the *National Center for Farmworker Health (NCFH)*. The FHN stands with everyone impacted by the Coronavirus (COVID-19), especially health providers and patients from special and vulnerable populations. In a consolidated effort to bring to you the latest updates, the FHN will be sending out this biweekly email with resources and information to keep you informed and assist you in continuing to serve your patient population. Information related to this pandemic changes daily, so we also encourage you to visit the [CDC's website](https://www.cdc.gov) for additional updates that may impact your specific service areas.

Resources

Updated NCFH Infographic!

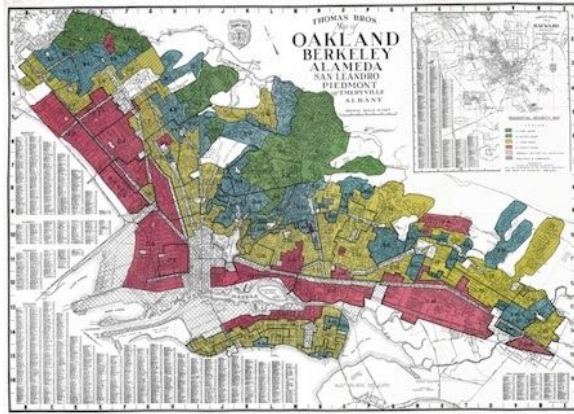
HRSA Survey on COVID-19 Response

HRSA has begun conducting biweekly surveys with Community Health Centers to track their response to the COVID-19 pandemic. The survey responses provide information about PPE needs, clinic site closures, COVID-19 testing, and other factors. See the latest [NCFH infographic](#) describing the results of the most recently available survey data for Migrant Health Centers.



Structural Competency

(Recorded Webinar)



Health Outreach Partners facilitated a webinar on **Structural Competency** on May 27th, 2020. In this webinar, the Structural Competency framework and key concepts are introduced, including structural violence and racism, implicit frameworks, and structural interventions. This webinar aims to provide you with the ability to discern how structures impact the health of your patients and communities. Essentially, structural competency provides a broader analysis of health disparities by looking at the political, economic, and social structures which impact the health of communities, and make certain groups more vulnerable to harm.

This topic is of extra importance during the COVID-19 pandemic, as communities of color and other marginalized populations experience infection and death at disproportionate rates, largely due to structural factors.

View a recording of this webinar here: <https://outreach-partners.org/2020/05/29/structural-competency/>

Recent Events

Masks 4 Farmworkers Initiative



NCFH is partnering with Mario De La Torre, Justice 4 Migrant Women, and the Hispanic Heritage Foundation to provide farmworkers and the rural health care providers who serve them with much needed personal protective equipment (PPE) through the **#Masks4Farmworkers** initiative. Learn more about this initiative [here](#).

To request masks, please submit information at info@ncfh.org or call 1-800-377-9968.

To support the effort by sewing or contributing materials for masks, please complete this form: <https://forms.gle/9n2mbVHJJUwyiz8j7>.

MHP Salud Monthly Technical Assistance Call - CHWs and COVID-19



**OUTCOMES-DRIVEN
EXPERIENCED
INNOVATIVE**

MHP Salud will provide technical assistance to Health Centers looking to learn more about Community Health Workers (CHWs) and their unique response to COVID-19. Join to learn and discuss common challenges, best practices, and helpful resources to strengthen your CHW programs and efforts during these times.

Wednesday, June 24th, 2020 at 2:00PM (CDT) / 3:00PM (EDT)

Join Zoom Meeting via **Access Link** or **Dial to Connect Number**:

Access Link: <https://mhpsalud.zoom.us/j/656807156>

Dial to Connect Number: +16699006833 (United States)

Meeting ID: 656 807 156

Policy Updates

New CDC Guidance for Agricultural Workers and Employers:

The Centers for Disease Control and Prevention (CDC) and the U.S. Department of Labor (DOL) issued joint interim COVID-19 guidance for agricultural workers and employers. The guidance includes recommendations for the screening and monitoring of workers, disinfection and sanitation, provision of masks and personal protective equipment, housing, and transportation. The guidance can be found on the [CDC website](#).

Washington Governor Announces Safety Protections for Farmworkers:

On May 28, Washington Governor Jay Inslee [announced](#) required safety protections at agricultural worksites to protect farmworkers from COVID-19. Employers are required to document and maintain a COVID-19 response plan. They must provide masks, additional handwashing stations, temperature checks at the beginning and end of a shift, timely access to testing for symptomatic employees, and education and training. The provisions went into effect on June 3, 2020.

Food Supply Protection Act:

Senators Debbie Stabenow (MI) and Sherrod Brown (OH) recently introduced the [Food Supply Protection Act](#), which aims to bolster various sectors in the food supply chain. The bill includes grants and loans to purchase PPE as well as test kits and cleaning to protect workers (including farmworkers). Those same grants and loans can also be used to upgrade equipment so that small and medium sized processing plants can run more efficiently. Additionally, the bill provides funding to food banks and nonprofits to increase their ability to serve more individuals.

The **FHN** is committed to continuously serving our constituents, health providers, and patients across the country. We stand with you in solidarity during this difficult time!



This publication was supported by the Health Resources and Services Administration (HRSA) of the U.S. Department of Health and Human Services (HHS) as part of the following National Training and Technical Assistance Cooperative Agreements awards: National Center for Farmworker Health (NCFH) in the amount of \$1,433,856; Farmworker Justice (FJ) in the amount of \$450,000; Health Outreach Partners (HOP) in the amount of \$770,259; Migrant Clinicians Network (MCN) in the amount of \$1,094,709; MHP Salud in the amount of \$617,235; National Association of Community Health Centers (NACHC) in the amount of \$6,375,000 all of these amounts with 0 percent financed with non-governmental sources. This information or content and conclusions are those of the author and should not be construed as the official position or policy of, nor should any endorsements be inferred by HRSA, HHS or the U.S. Government. For more information, please visit [https://: www.HRSA.gov](https://www.HRSA.gov).

Farmworker Health Network